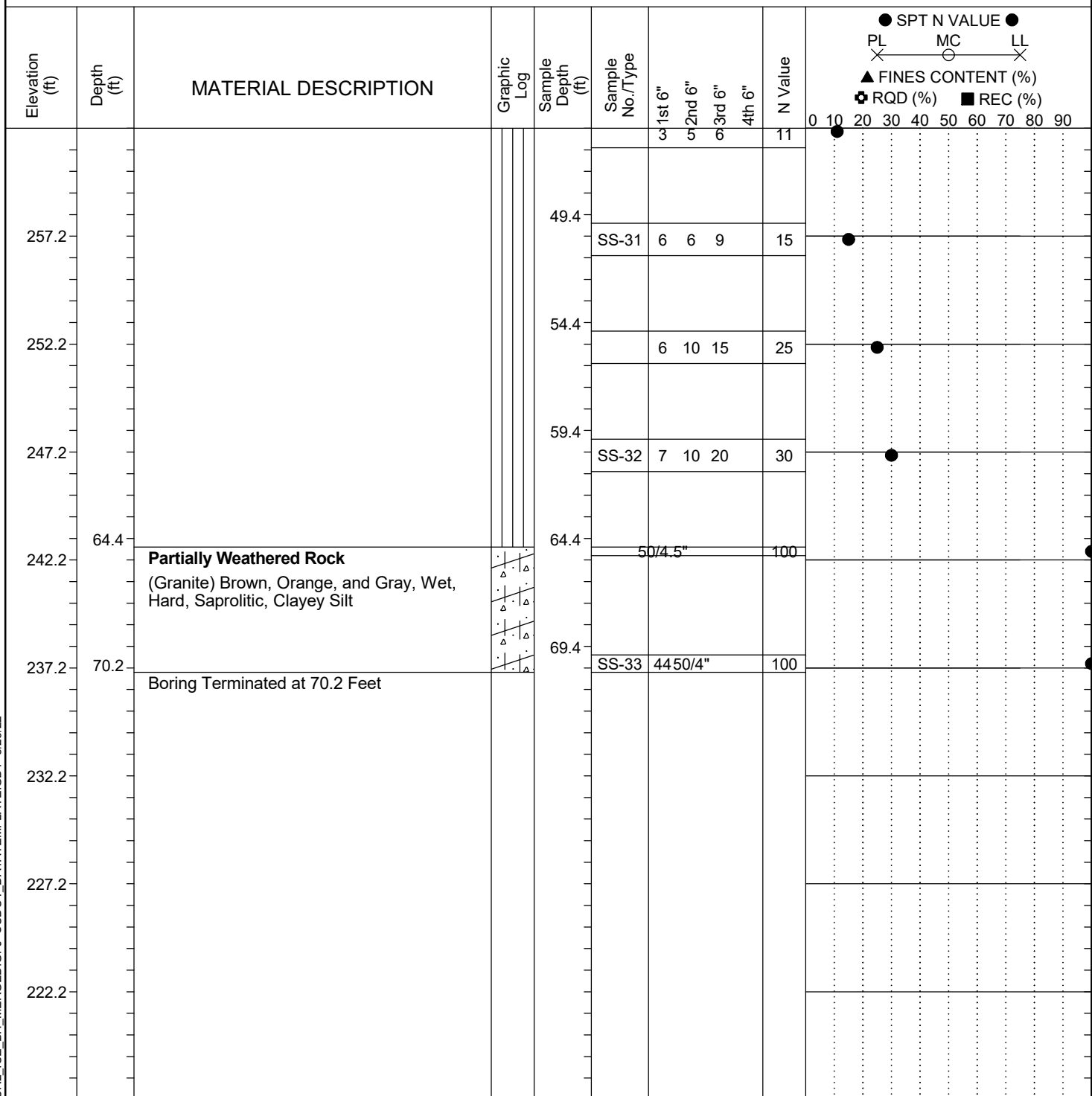


Project ID:	P039719	County:	Richland	Boring No.:	G-108
Site Description:	Carolina Crossroads Phase 2			Route:	Ramp
Eng./Geo.:	C. McIlroy	Boring Location:	395+85	Offset:	36 LT
Elev.:	307.2 ft	Latitude:	34.03923212	Longitude:	-81.09603626
Date Started:	4/28/2022				
Total Depth:	70.2 ft	Soil Depth:	70.2 ft	Core Depth:	N/A ft
Date Completed:	4/28/2022				
Bore Hole Diameter (in):	2.25	Sampler Configuration	Liner Required: Y (N)		Liner Used: Y (N)
Drill Machine:	D-50 #439	Drill Method:	RW	Hammer Type:	Automatic
Energy Ratio:	90.8%				
Core Size:	N/A	Driller:	R. Cassell	Groundwater:	TOB N/A
24HR	19.1 ft				



LEGEND

SAMPLER TYPE		DRILLING METHOD	
SS - Split Spoon	NQ - Rock Core, 1-7/8"	HSA - Hollow Stem Auger	RW - Rotary Wash
UD - Undisturbed Sample	CU - Cuttings	CFA - Continuous Flight Augers	RC - Rock Core
AWG - Rock Core, 1-1/8"	CT - Continuous Tube	DC - Driving Casing	